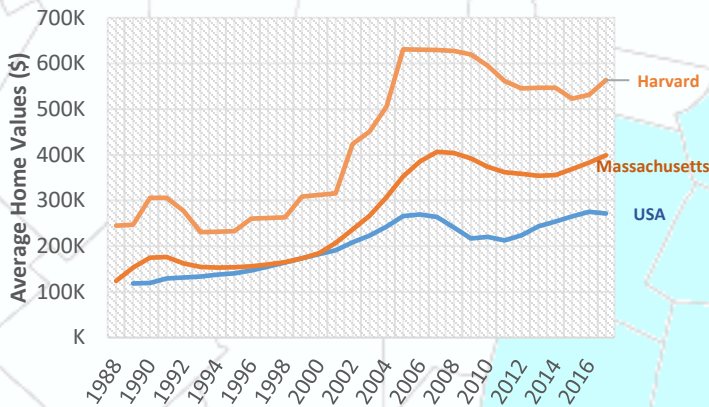
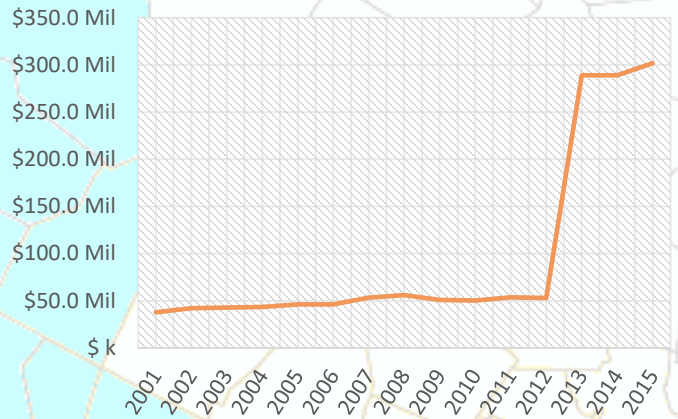


Rising Home Values



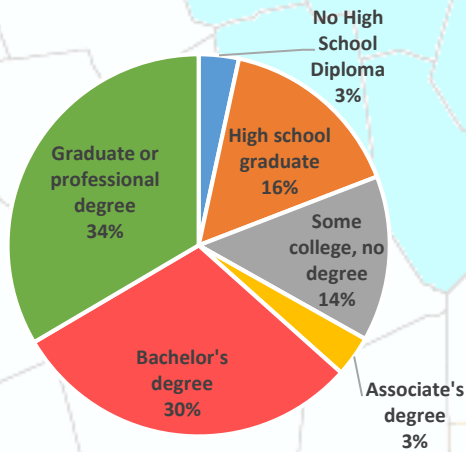
Beyond the year to year averages, in 2016, the median single family home in Harvard sold for \$531,669¹. This is much higher than the state median sale price for 2016 which was \$345,000¹ and the national median for that year which was \$232,067².

Increasing Payroll



From Q2 2015 to Q2 2016, the payroll for all places of employment in Harvard was \$308,116,735.³ As the town has recovered from the recession, the payroll has increased significantly in the last few years. It should be noted that Harvard's data includes portions of Devens.

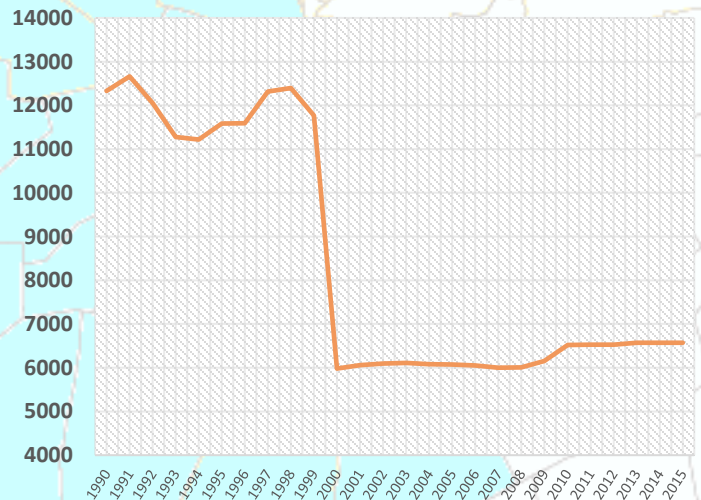
Highly Educated



2011-2015 ACS (U.S. Census Bureau)

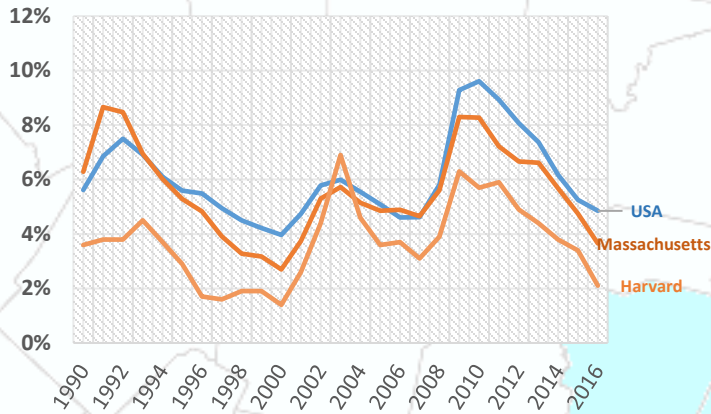
Harvard has a highly educated population compared to the state and to the nation with 64% of residents having a bachelor's degree or higher. During the same time 40.5% of people in Massachusetts had a bachelor's degree or higher, while only 29.8% of all people in the U.S. had one.⁴

Population

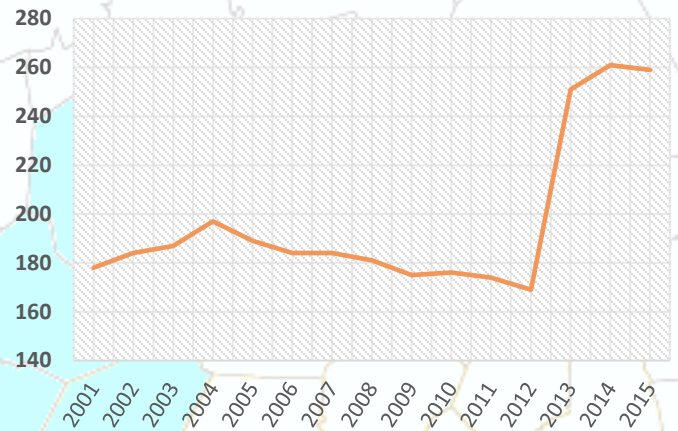


The population of Harvard has been increasing slowly after a quite substantial decline in population shown around the year 2000 which is due to the closure of Fort Devens in 1996. The population of the town was 5,981 in 2000 this increased to 6,520 by 2010, and in 2015, the population of Harvard was estimated to be approximately 6,573.⁵

Low Unemployment



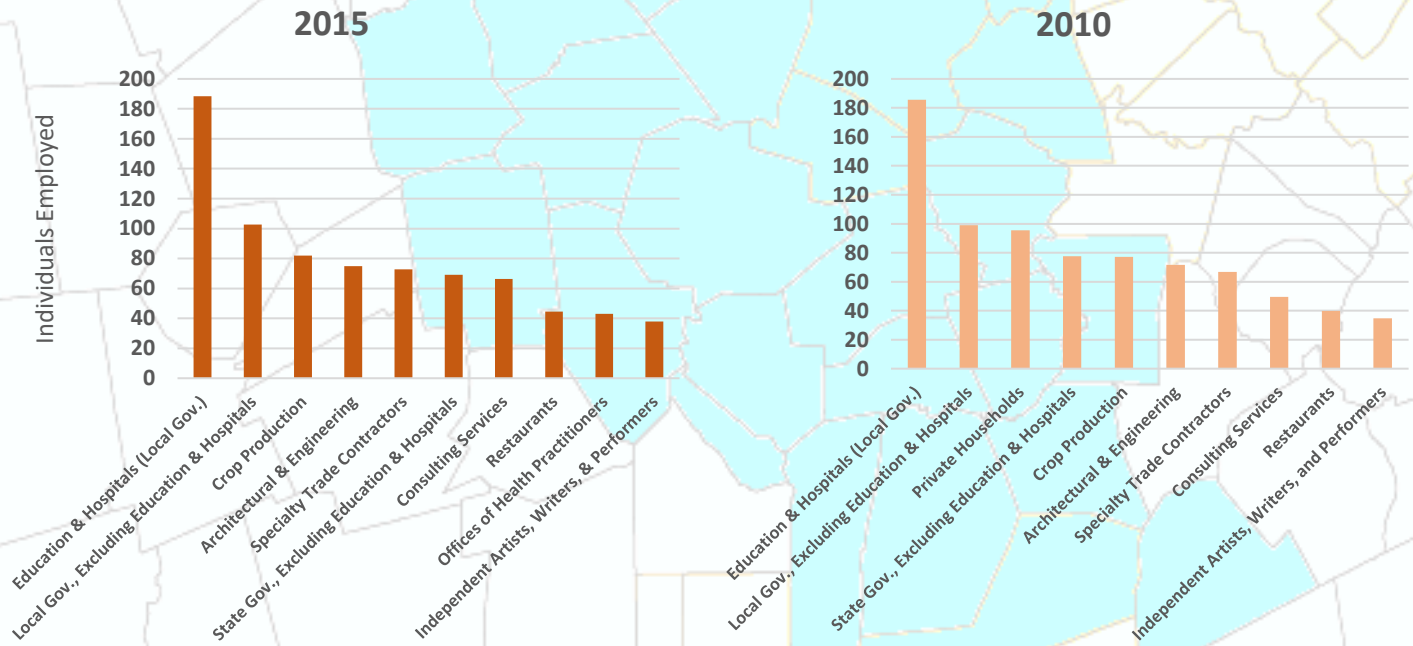
Expanding Employers



Beyond the year to year averages, in February 2017, the unemployment rate in Harvard was 2.9%. This is lower than the state and 495/MetroWest regional unemployment rates, which were both 3.4%, and much lower than the national unemployment rate of 4.8%³

The number of employers in Harvard has been increasing. In 2001, there were 178 employers in the town, and by Q2 2016 this number had increased to 266.³ It should be noted that Harvard's data includes portions of Devens.

Top Ten Industries In Harvard



Top Ten Industries data and analysis conducted by the Public Policy Center at UMass Dartmouth for the 495/MetroWest Partnership in support of the 495/MW Suburban Edge Community Commission utilizing 2014 US Census Bureau Local Employment Dynamics. For more information on these data sets please visit <http://lehd.ces.census.gov/>

Sources:

- Mass.gov Municipal Databank <http://www.mass.gov/dor/local-officials/municipal-databank-and-local-aid-unit/databank-reports-new.html> (Line graph municipal data)
 1. The Warren Group <http://www.twgstats.com/tssub/start.asp> 2. Ycharts Average US Home Values https://ycharts.com/indicators/sales_price_of_existing_homes
 3. Mass.gov Labor and Workforce Development <http://www.mass.gov/lwd/economic-data/> 4. US Census Bureau <https://www.census.gov/> 5. UMASS Donahue Institute <http://www.donahue.umassp.edu/news-events/institute-news/new-population-estimates-for-mass-released-interactive-map-available>